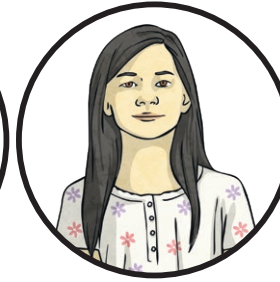
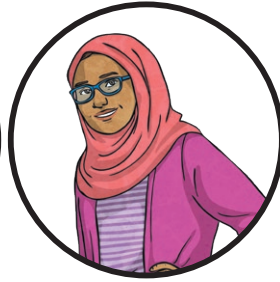


# Mini Mystery: Sentences, Phrases and Clauses

One of these culprits is responsible for scrambling the sentences below. Each of the culprits has been caught red-handed, carrying five important words or grammatical features away from the scene.

To crack the case, solve the puzzles and find the suspect who has every word or grammatical feature needed to correctly complete the sentences.

The suspects are:



**Alfie Downs Evans**  
adverbial phrase  
which  
simple  
main clause  
statement

**Gita Sunil**  
compound  
subordinate clause  
noun phrase  
command  
which

**Daffydd Jones**  
main clause  
exclamation  
whose  
prepositional phrase  
complex

**Manon Bisset**  
noun phrase  
compound  
question  
subordinate clause  
which

**Thor**  
which  
complex  
command  
noun phrase  
relative clause

## Puzzle 1

Which relative pronoun is missing from the following sentence? Tick **one** answer.

**Thor is wearing a yellow coat, \_\_\_\_\_ is too big for him because he is quite short.**

who

which

whose

## Puzzle 2

Which sentence type is the following sentence? Tick **one** answer.

**Tidy the classroom as quickly as possible.**

statement

command

question

exclamation

## Puzzle 3

Which type of phrase is underlined in the following sentence? Tick **one** answer.

**Gita always wears her blue, fluffy coat on chilly days.**

adverbial phrase

prepositional phrase

noun phrase

**Puzzle 4**

Which type of clause is underlined in the following sentence? Tick **one** answer.

If it snows, we will go out to make a huge snowman, which will wear a hat and scarf.

main clause

subordinate clause

relative clause

**Puzzle 5**

Which type of sentence is the following sentence? Tick **one** answer.

**I love playing football but I enjoy riding my bike more.**

simple

compound

complex

Which culprit scrambled the sentences? \_\_\_\_\_

# Mini Mystery: Sentences, Phrases and Clauses **Answers**

The suspects are:



**Alfie Downs Evans**  
adverbial phrase  
**which**  
simple  
main clause  
statement



**Gita Sunil**  
**compound**  
subordinate clause  
**noun phrase**  
**command**  
**which**



**Daffydd Jones**  
main clause  
exclamation  
whose  
prepositional phrase  
complex



**Manon Bisset**  
**noun phrase**  
**compound**  
question  
**subordinate clause**  
**which**



**Thor**  
**which**  
complex  
**command**  
**noun phrase**  
relative clause

## Puzzle 1

Which relative pronoun is missing from the following sentence? Tick **one** answer.

**Thor is wearing a yellow coat, \_\_\_\_\_ is too big for him because he is quite short.**

who

which

whose

## Puzzle 2

Which sentence type is the following sentence? Tick **one** answer.

**Tidy the classroom as quickly as possible.**

statement

command

question

exclamation

## Puzzle 3

Which type of phrase is underlined in the following sentence? Tick **one** answer.

**Gita always wears her blue, fluffy coat on chilly days.**

adverbial phrase

prepositional phrase

noun phrase

**Puzzle 4**

Which type of clause is underlined in the following sentence? Tick **one** answer.

If it snows, we will go out to make a huge snowman, which will wear a hat and scarf.

main clause

subordinate clause

relative clause

**Puzzle 5**

Which type of sentence is the following sentence? Tick **one** answer.

**I love playing football but I enjoy riding my bike more.**

simple

compound

complex

Which culprit scrambled the sentences? **Gita Sunil**